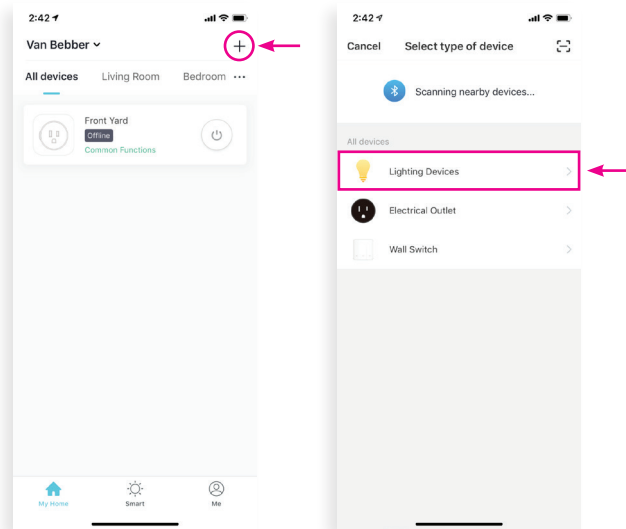


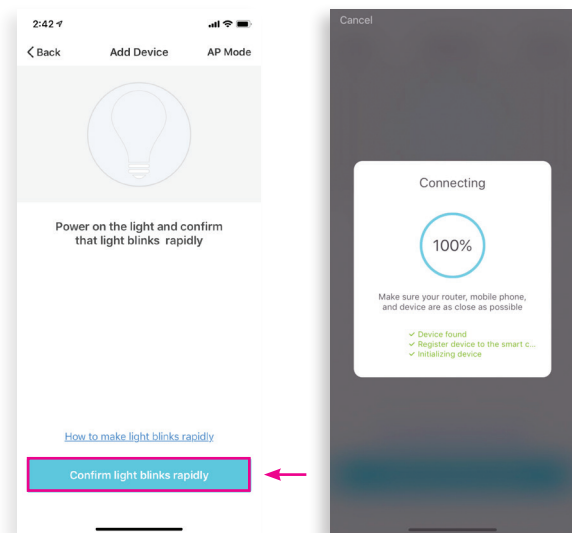
CHAMELEON SET UP INSTRUCTIONS



1. Download **“Brilliance Smart”** from Apple App Store or Google Play. Register account if first time user.
2. Connected to a power source, turn lamp **on/off 3-5 times**. Light will start to **blink rapidly**.
3. In the app press the plus (+) button in the top right to add a new device. Click **Lighting Devices**.



4. Press **“Confirm light blinks rapidly”**, and wait for lamp to sync.



5. Once synced, rename lamp and press **“Completed”**.

6. **Enjoy the new world of color.**



Activate Intelligent Lighting

Brilliance LED | brillianceled.com | 800.867.2108

Follow us on social media: [brilliance.led](https://www.instagram.com/brilliance.led) Brilliance LED, LLC